

# Now Leasing Retail/Office

# CENTURY SQUARE PLAZA

## CENTER HIGHLIGHTS

- **SPACE AVAILABLE:** 18,146 SF
- **RENTAL RATE:** \$19.00/SF/YEAR 1ST FLOOR
- **RENTAL RATE:** \$17.00/SF/YEAR 2ND FLOOR
- **NNN:** \$4.20/SF/YEAR
- **TI UP TO \$15.00/SF**
- **NEAR THE CORNER OF HWY90A AND CENTURY SQUARE BLVD.**
- **IDEAL FOR:**

INVESTMENT FIRM, MEDICAL OFFICE, DAYCARE, BEAUTY SCHOOL, TECHNICAL SCHOOL, ATTORNEY'S OFFICE.

## 2005 DEMOGRAPHICS

Total	1 MILE	3 MILE	5 MILE
Population:	9,967	76,652	256,215
Avg, HH Income:	\$101,182	\$91,047	\$89,410
Total Households:	2,921	22,503	73,184



**Plan • Build • Design**

**Jillian Uresti**

**4660 Sweetwater Blvd. Suite 300**

**Sugar Land, TX 77479**

**Telephone: (281)-242-8464**

**Facsimile: (281)-242-8474**

**Email: jill@shahcompanies.com**

**203 Century Square Blvd. / Sugar Land, TX 77478**



### LEASE SPECIALS

### SMALL BUSINESS FINANCING

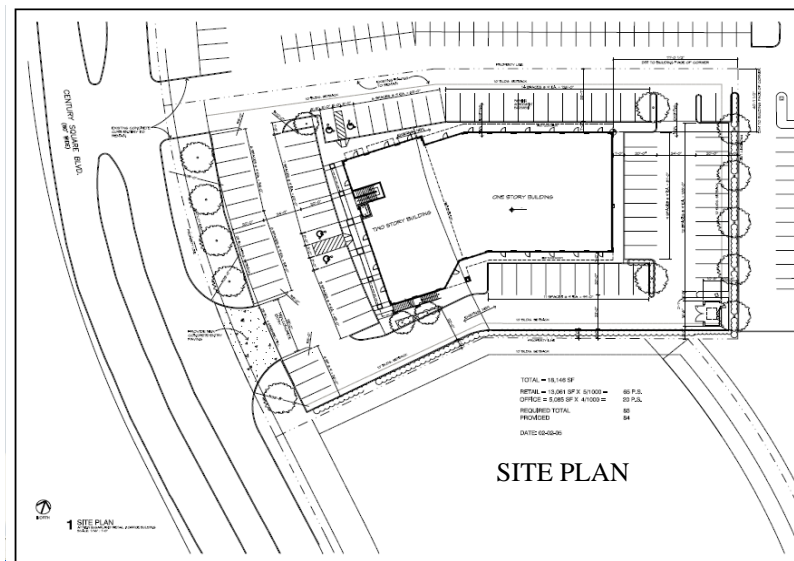
### FLEXIBLE RATES

**24 Hour Fitness, Comerica Bank,  
Houston Swim Club, Sherwin  
Williams, Vascos Bar-B-Q**

**US HWY  
90A**

**Century square  
Plaza**

**US HWY 59**



**SITE PLAN**